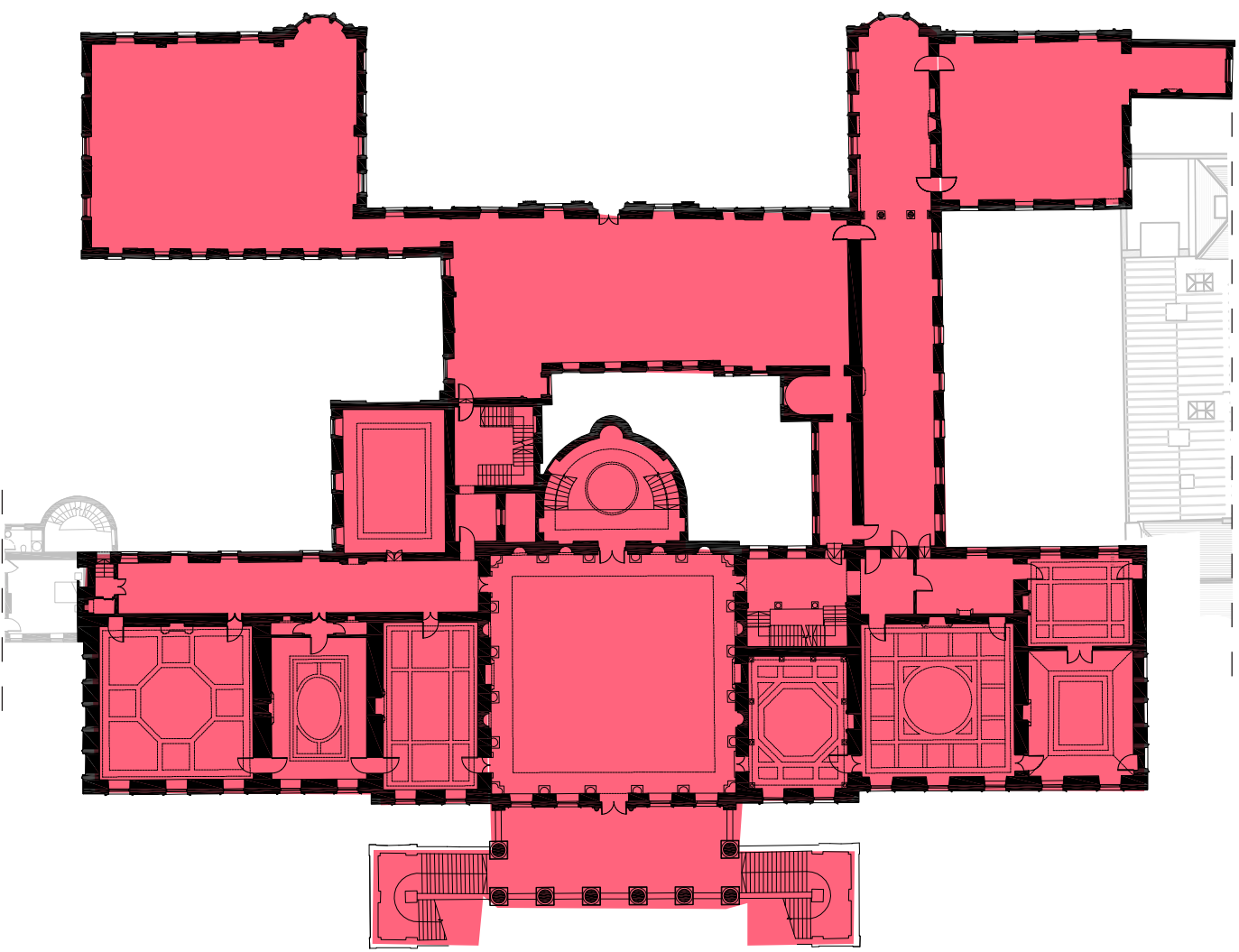
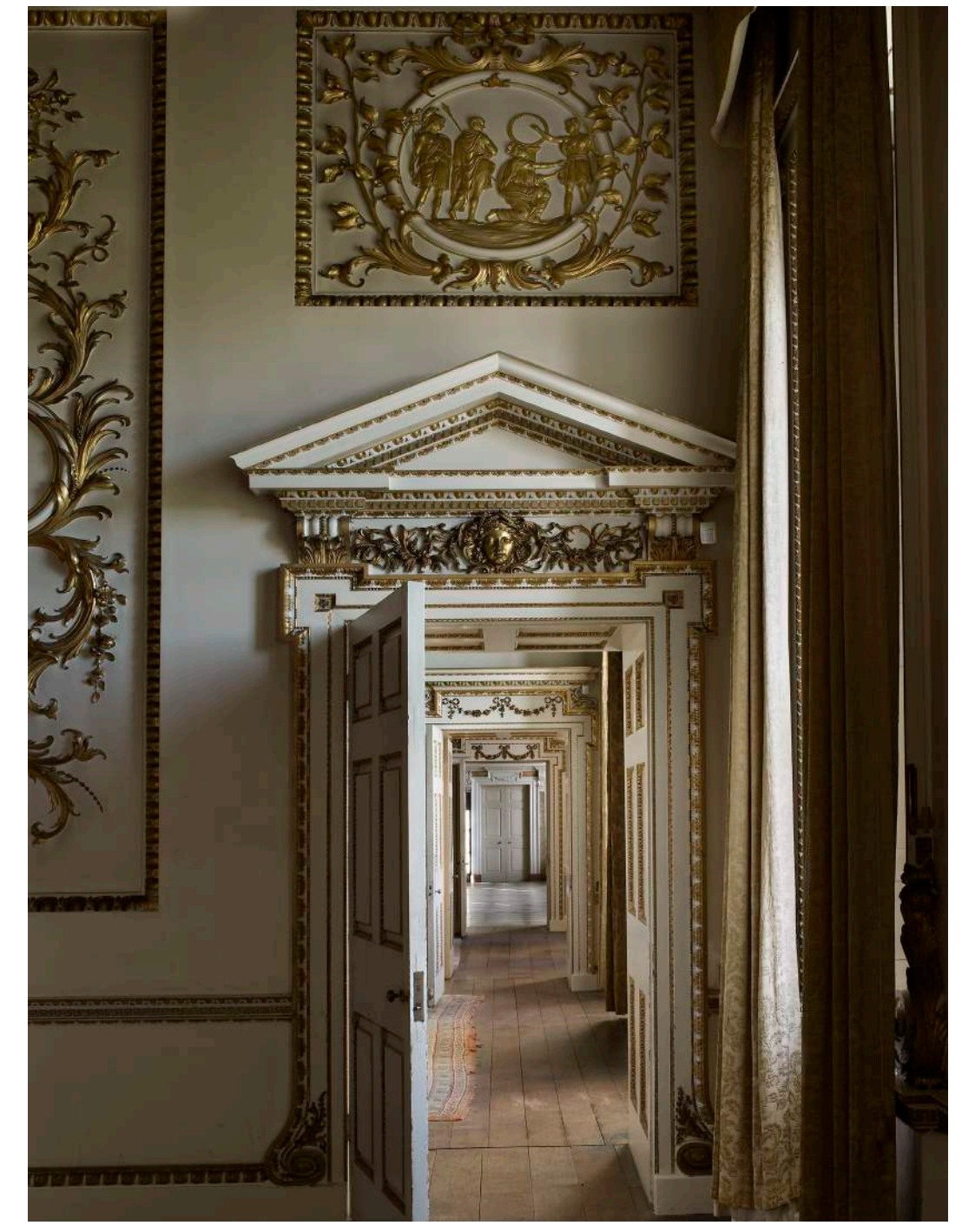


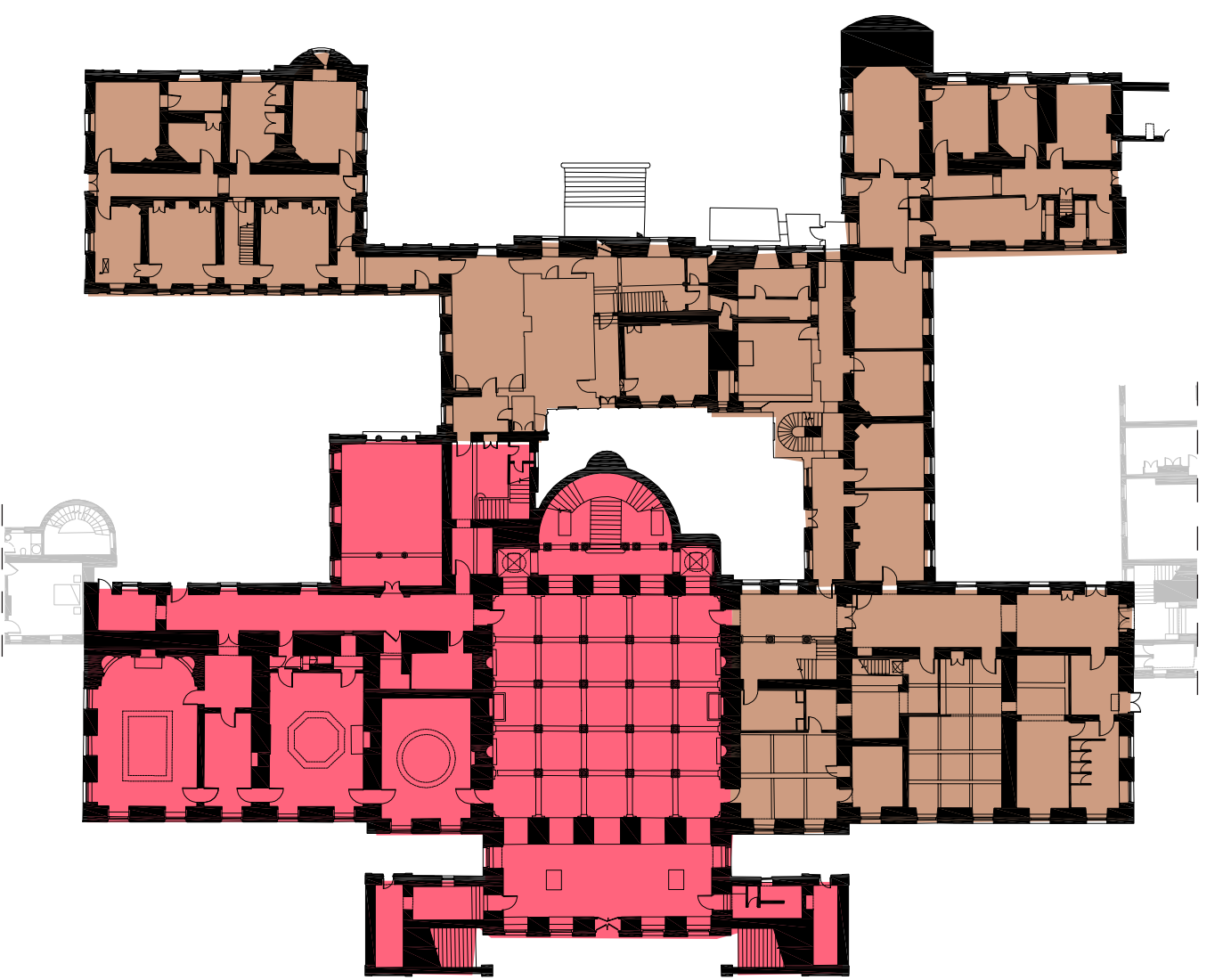
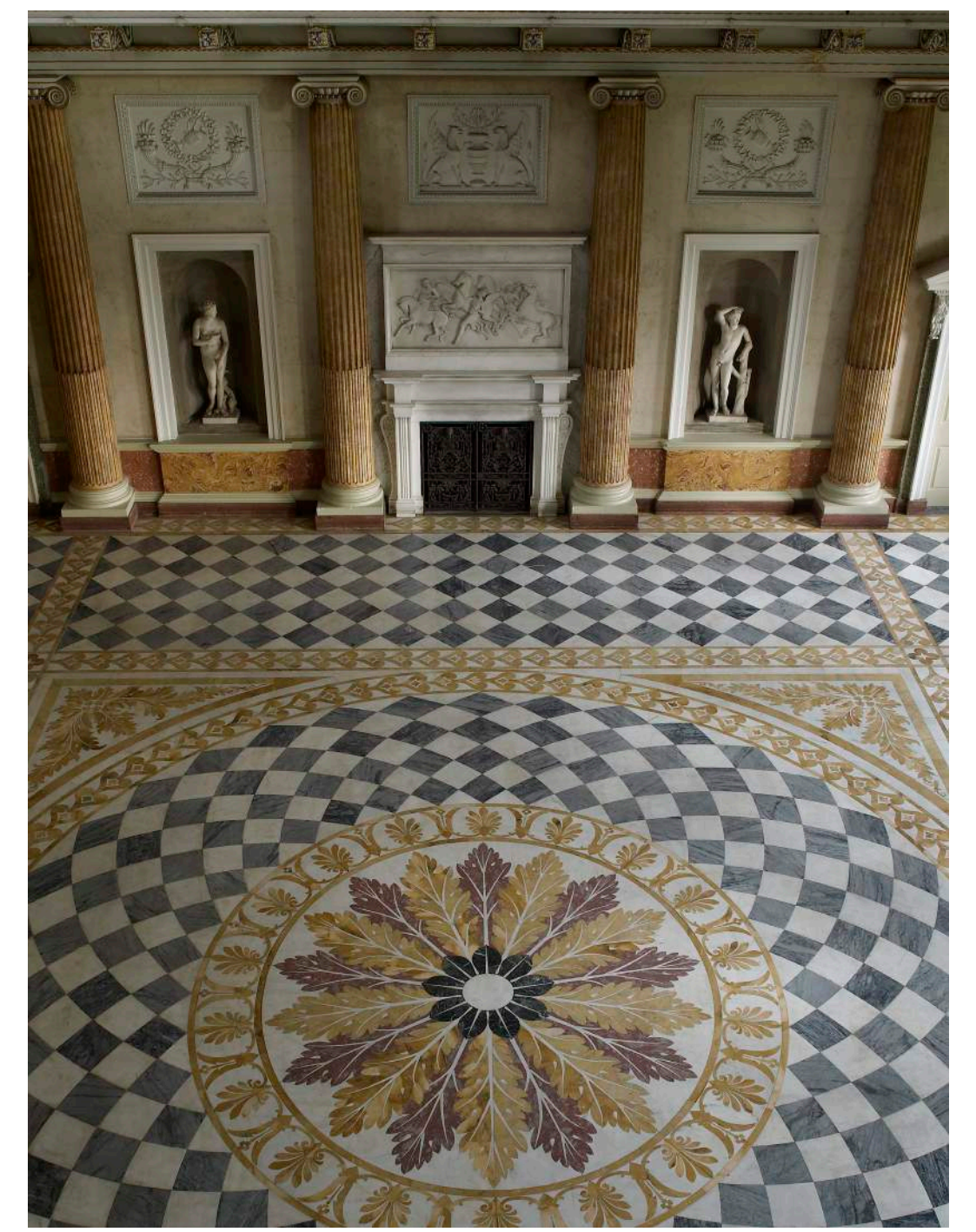
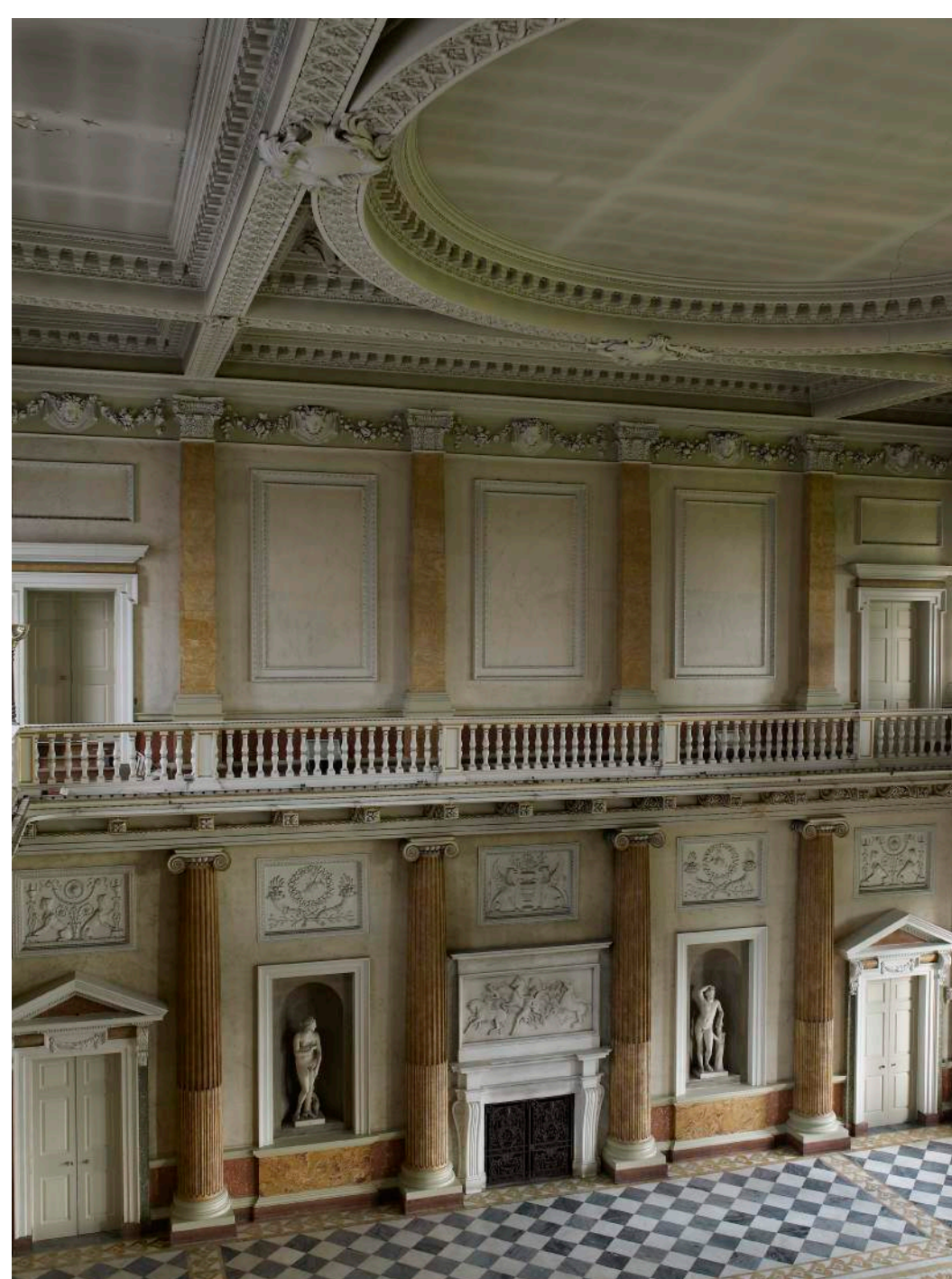
ATTIC FLOOR
0 10 N

On either side of the Marble Saloon two apartments can be formed with spectacular views over the Park. These can be used in conjunction with events taking place in the mansion.



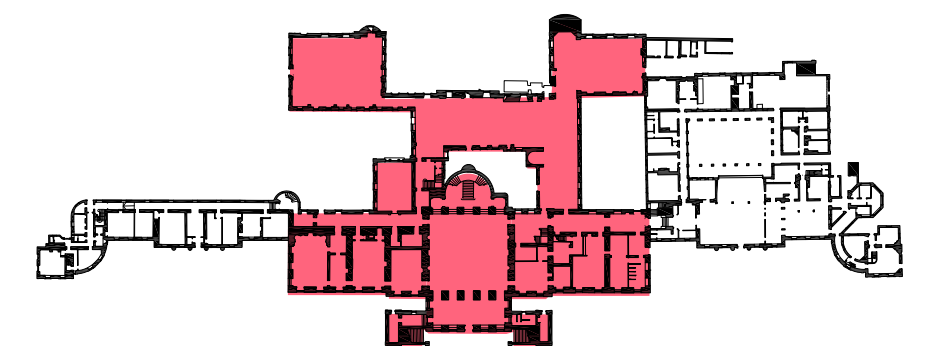
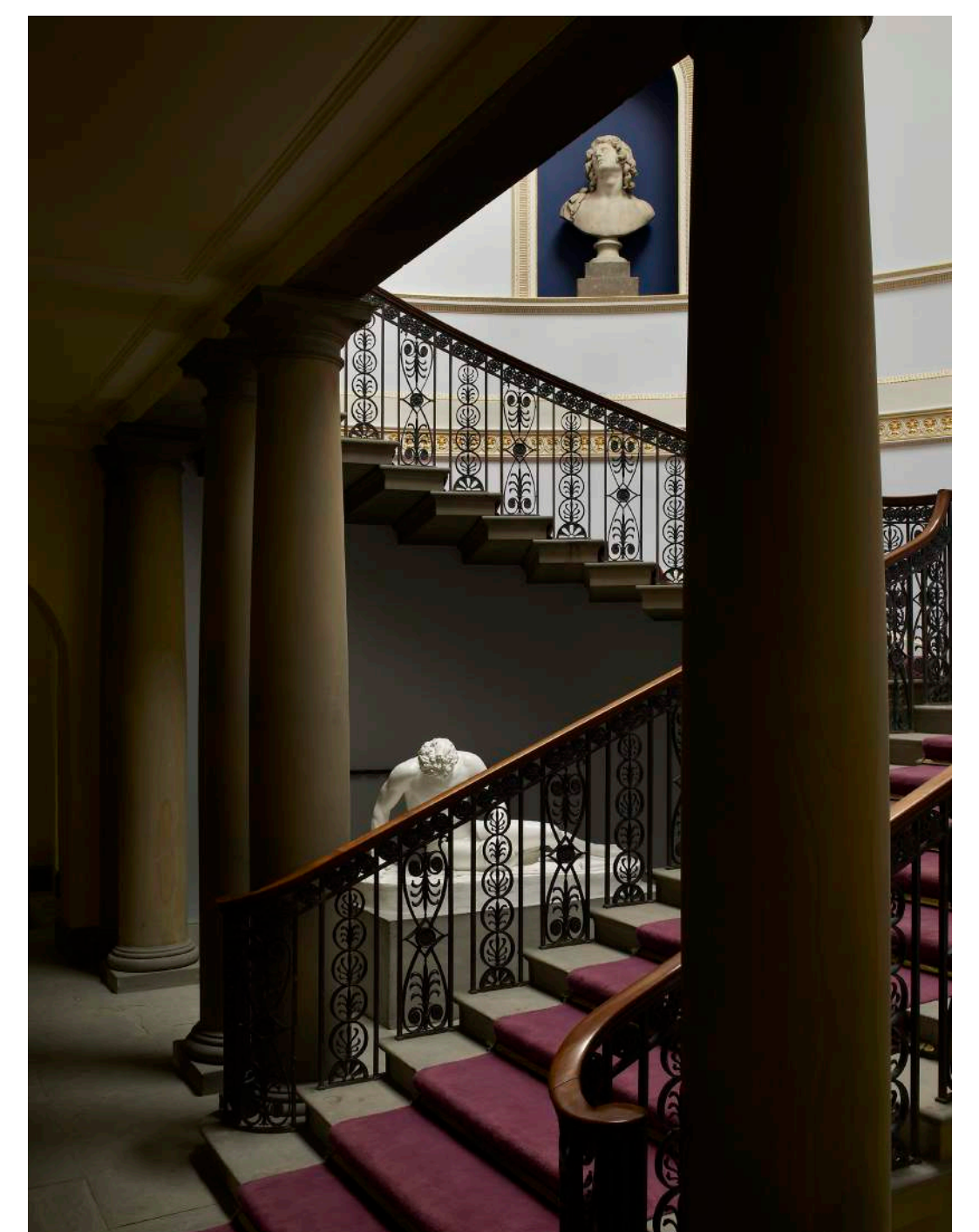
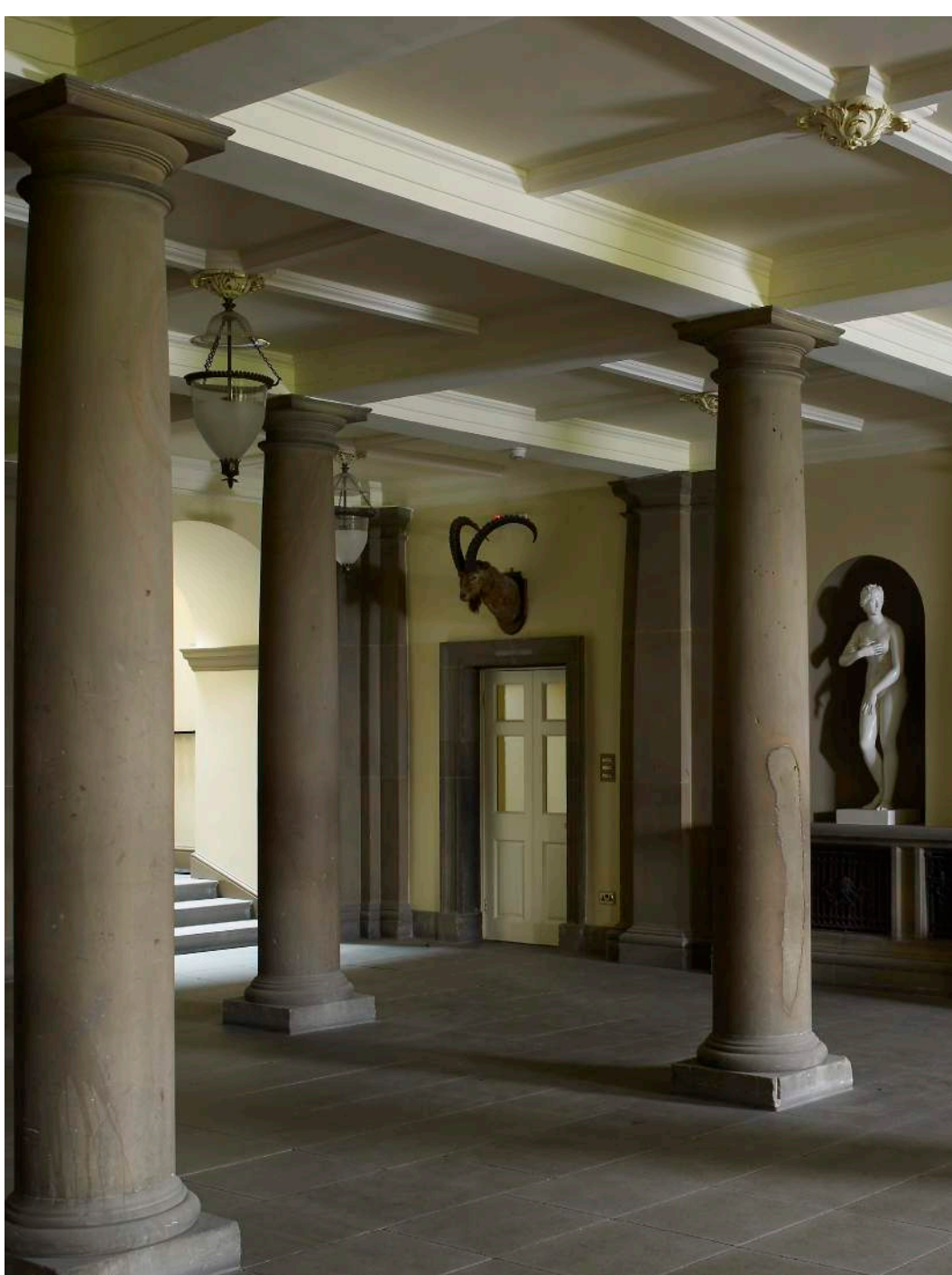
PRINCIPAL FLOOR
0 10 N

All the main rooms at this level are candidates for public viewing including the Marble Saloon, the chapel and the large rooms overlooking the park. The long gallery and West Entrance Hall and staircase will also be open, as well as adjacent apartments.



GROUND FLOOR
0 10 N

The columned Lower Hall and Palladian Rooms to the South will be open to visitors.



WENTWORTH WOODHOUSE
THE PRINCIPAL RANGE
ALL ROOMS WITH FEATURES OF INTEREST WILL
BE OPEN TO THE PUBLIC